



## Tofi's Weird Adventure

Where **are** these places?

# tofi 081007

I got back from work a little later than expected so it was a bit dark, and it had been overcast all day anyway, so most of the pictures are blurred because there just wasn't enough light to take the picture while Tofi was moving.

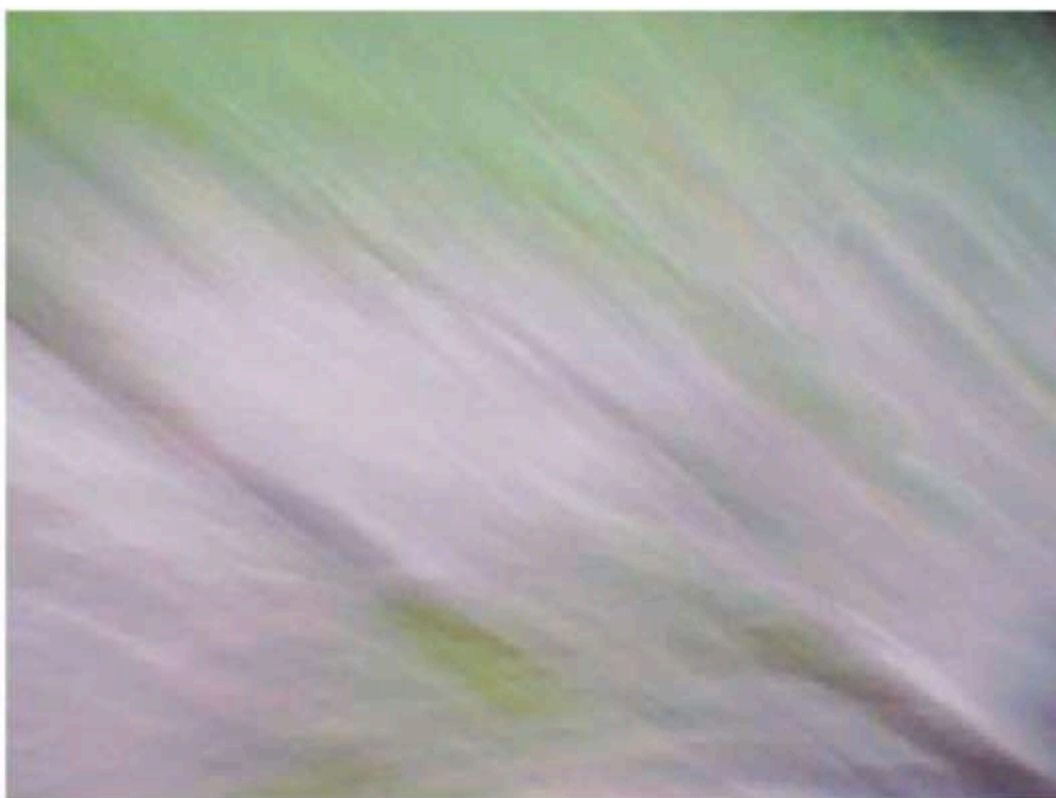
He had been in all day so I guess went walkabout when he was let out. It looks like he went around to No 17 (somewhere) then went down the drive (after stopping off at his favourite plant pot), then watched Peter Sheldon drive out (or maybe it's just where Peter parks his car?) and then found a small path somewhere (where?) and ended up by the wall by the news houses.... maybe!

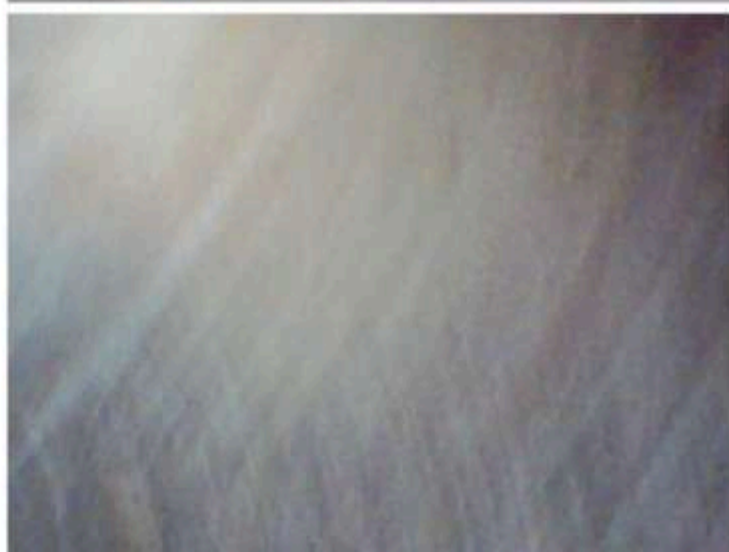
These were taken using 60 second intervals so I'm going to leave the camera on that setting and try again tomorrow!



tofi 081007

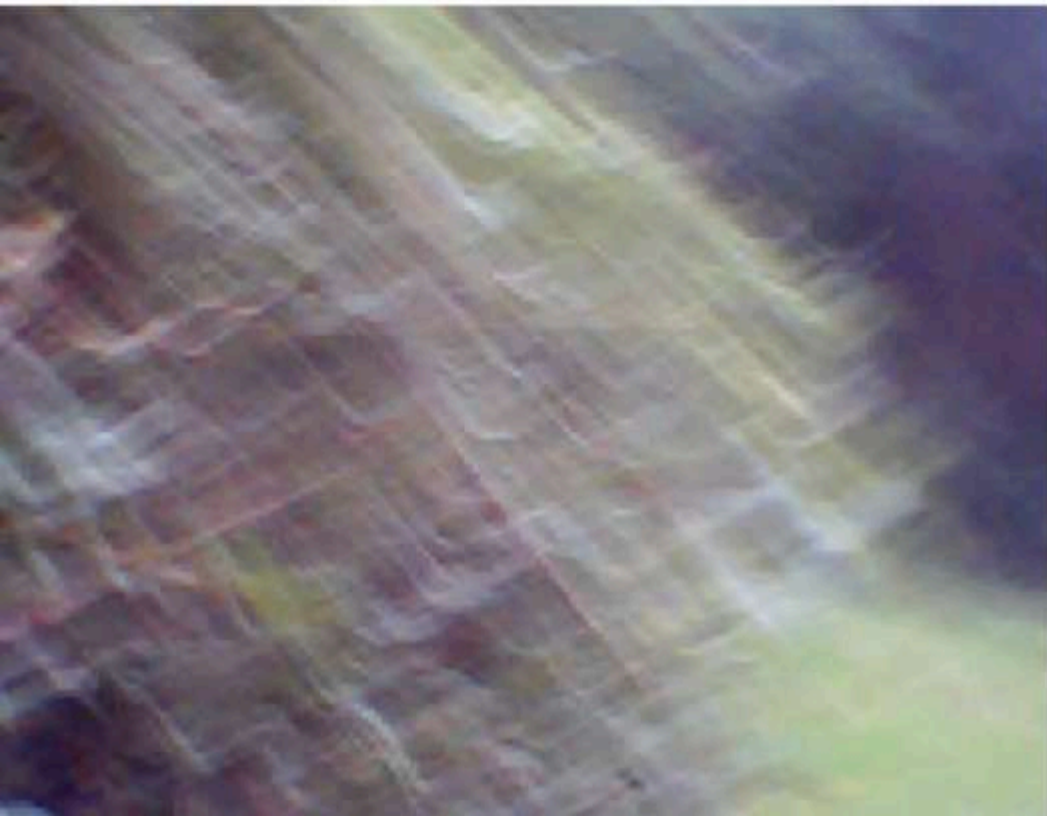
I'm not sure where these first few are - in the pit?



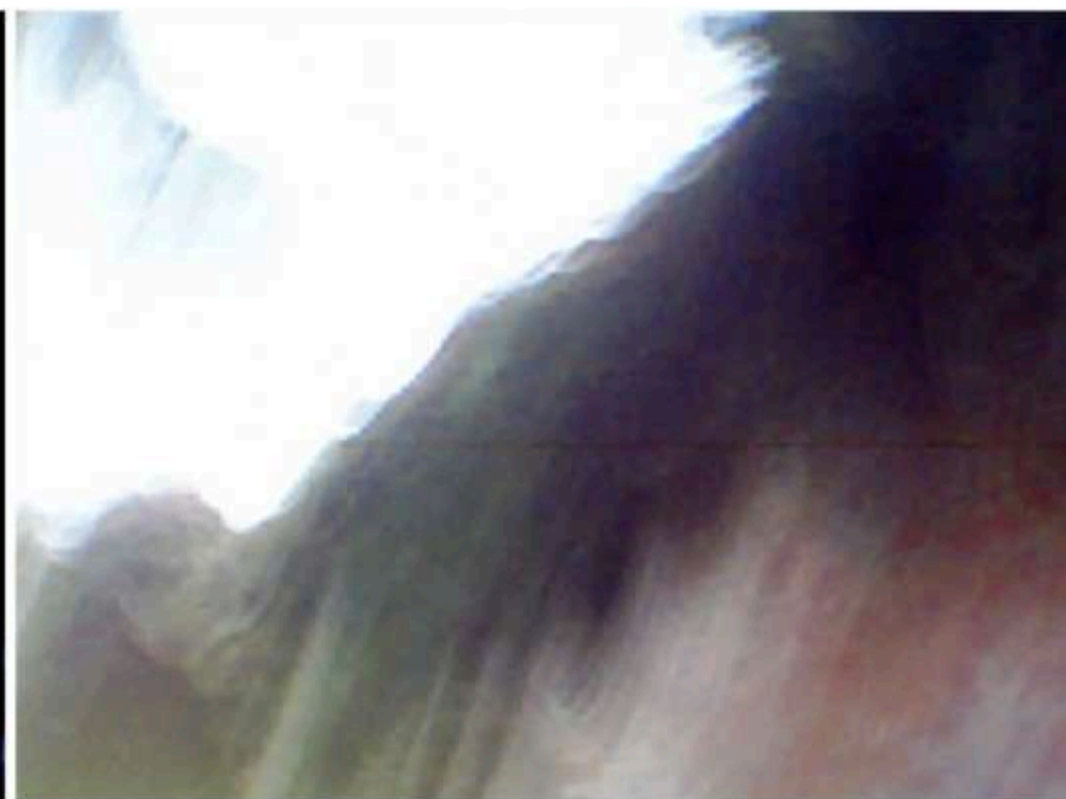
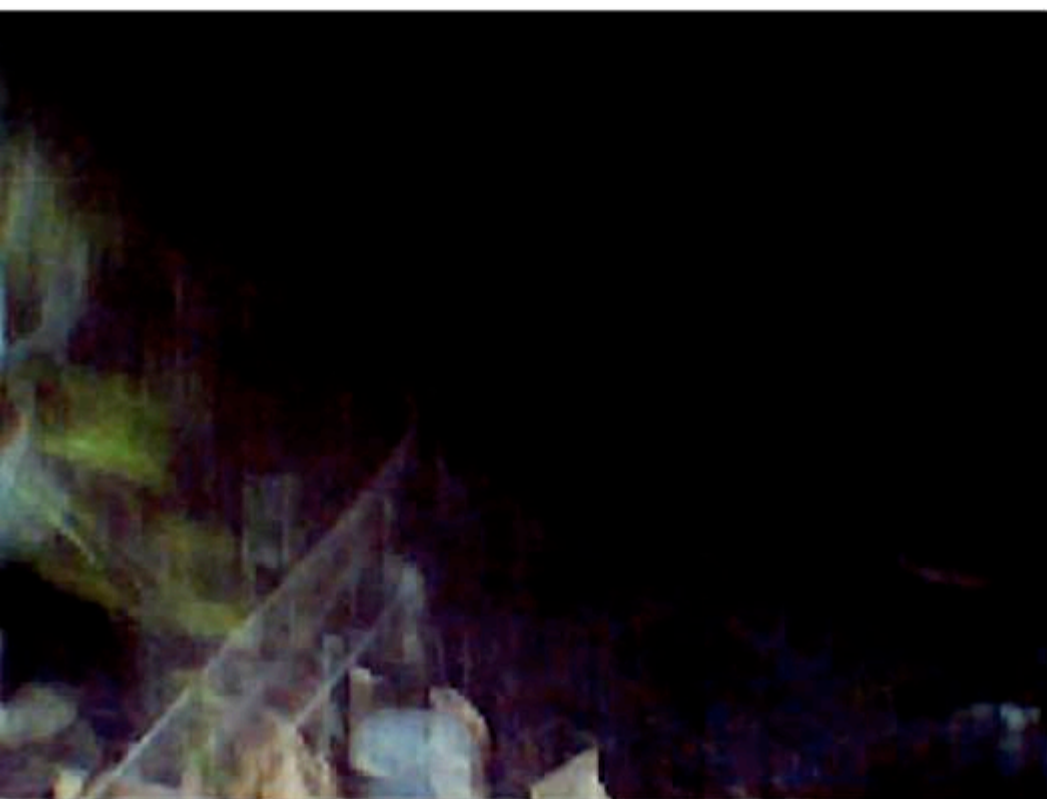


tofi 081007

The picture on the previous page looks like he's heading over to the car park at the far end, these seem to be the woods next to No 17?









tofi 081007

Tofi's favourite plant pot..... I think it might be Tricia's...

In the previous picture I think he's looking back towards our car park from the far end of our row of houses.







# tofi 081007

So on the previous pages he's been looking back at our car park end (?), been to see his plant pot, found some dug up earth, been on someone's patio and then headed back to the end row of houses from the tunnel?

Now he's off somewhere else, I think down by the far end, near the shed?

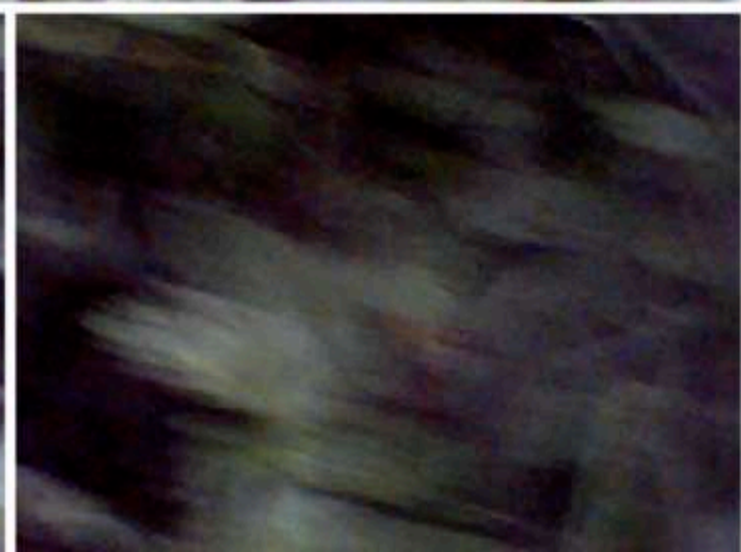
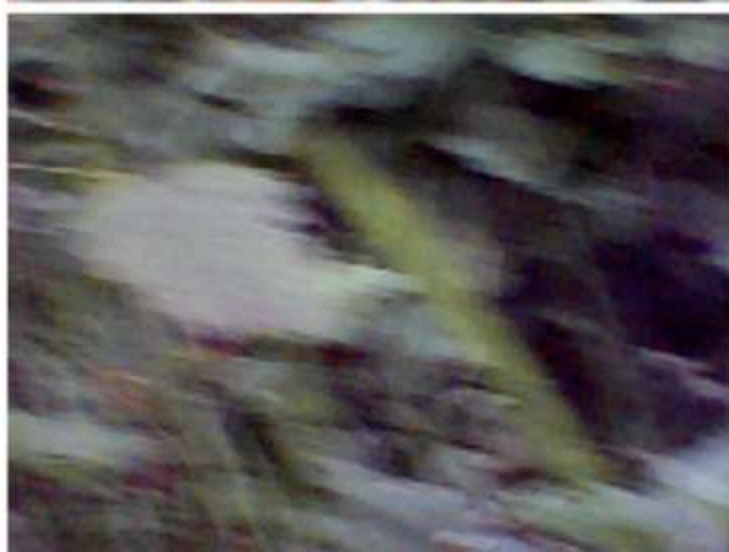
I have no idea where the big one on the next page is... it looks like the drive but I don't see how it can be. Then he's off sniffing a plant.... I have no idea where....

Then back to see Peter Sheldon's car, then on a patio somewhere and then in the pit, I'm pretty sure, then he finds some plants, then across the drive, then he finds a path somewhere (?) and then the wall by the news houses.....









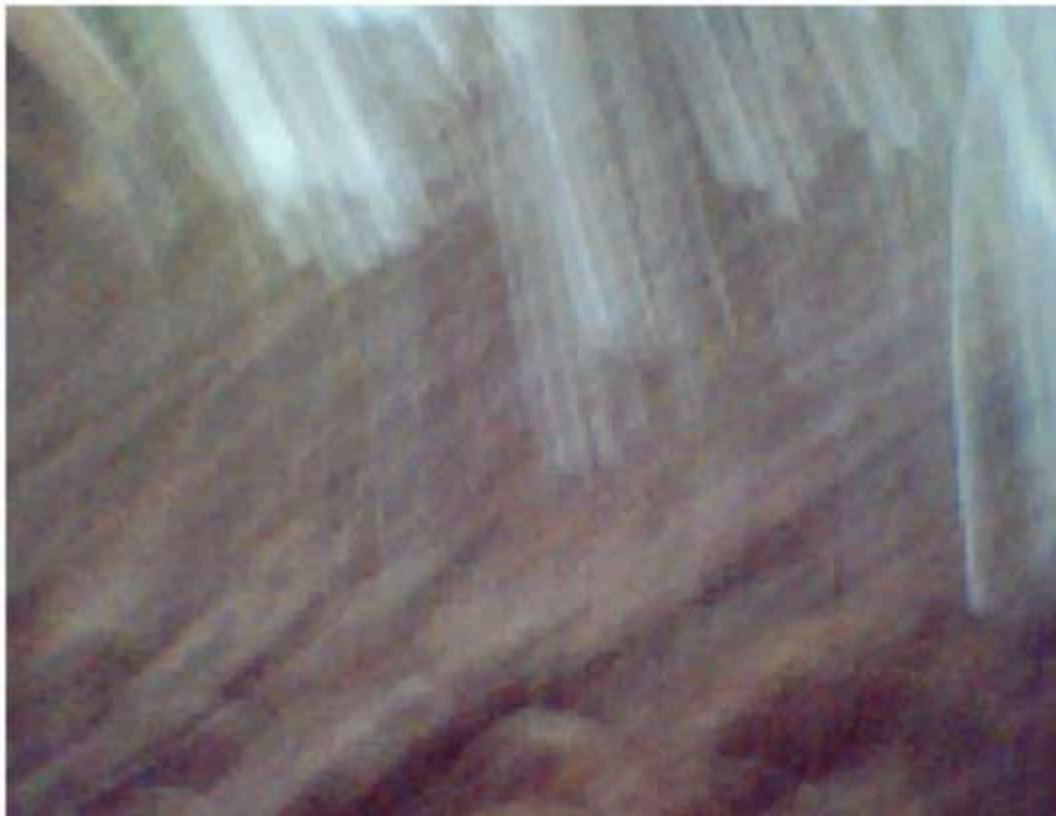
tofi 081007

Back under the tunnel?















tofi 081007

I have no idea where this is..... I think it might be the right hand side of the drive, looking towards the far row of garages?

The picture of the little gravelled path on the next page is a real mystery.

